

# *Configuring IBM Rational ClearTeam Explorer to use SimDiff*

---

## **Contents**

Introduction .....	2
Procedure .....	2
Configure SimDiff as a Compare/Merge Provider .....	2
Configure the SimDiff Provider to be used with MDL and SLX files .....	3
References .....	4

## Introduction

ClearTeam Explorer is an Eclipse-based user interface for IBM Rational ClearCase. It includes many of the features provided by the native ClearCase client, and can run on a broad range of systems.

Configuring ClearTeam Explorer to use SimDiff is a relatively straightforward process, and only involves changing a few settings in the ClearTeam Explorer Preferences.

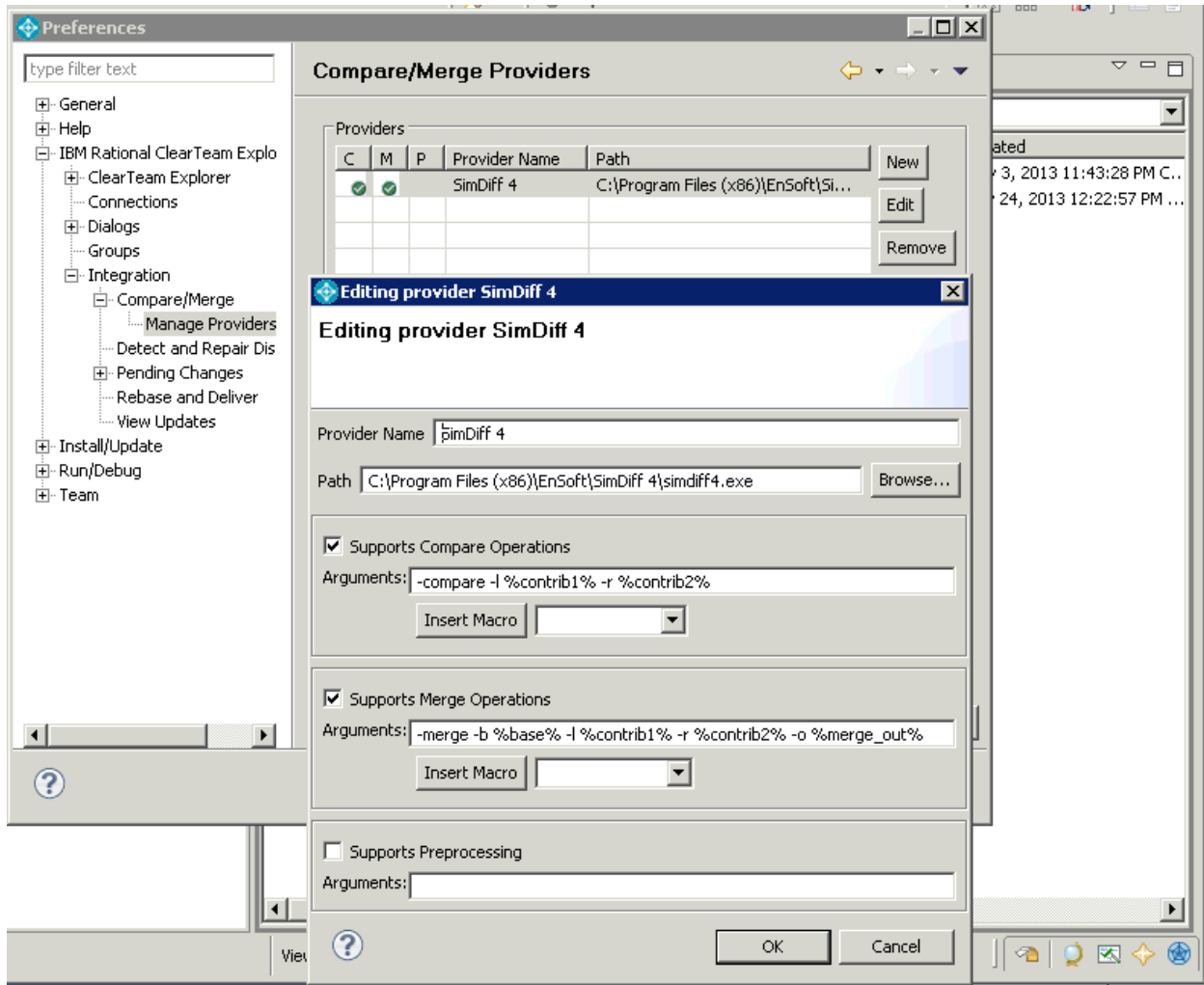
Please note - the ClearTeam Explorer integration does not apply to the native ClearCase client. Integration with the native client is not recommended, due to limitations in the native client integration API. However, if native client integration is necessary, you may contact [support@ensoftcorp.com](mailto:support@ensoftcorp.com) for more information.

## Procedure

First, SimDiff needs to be configured as a *Compare/Merge* Provider in the *ClearTeam Explorer* preferences. Once the provider is configured, then the *Compare/Merge* settings can be configured to use the SimDiff provider for files with the `.mdl` and `.slx` extension.

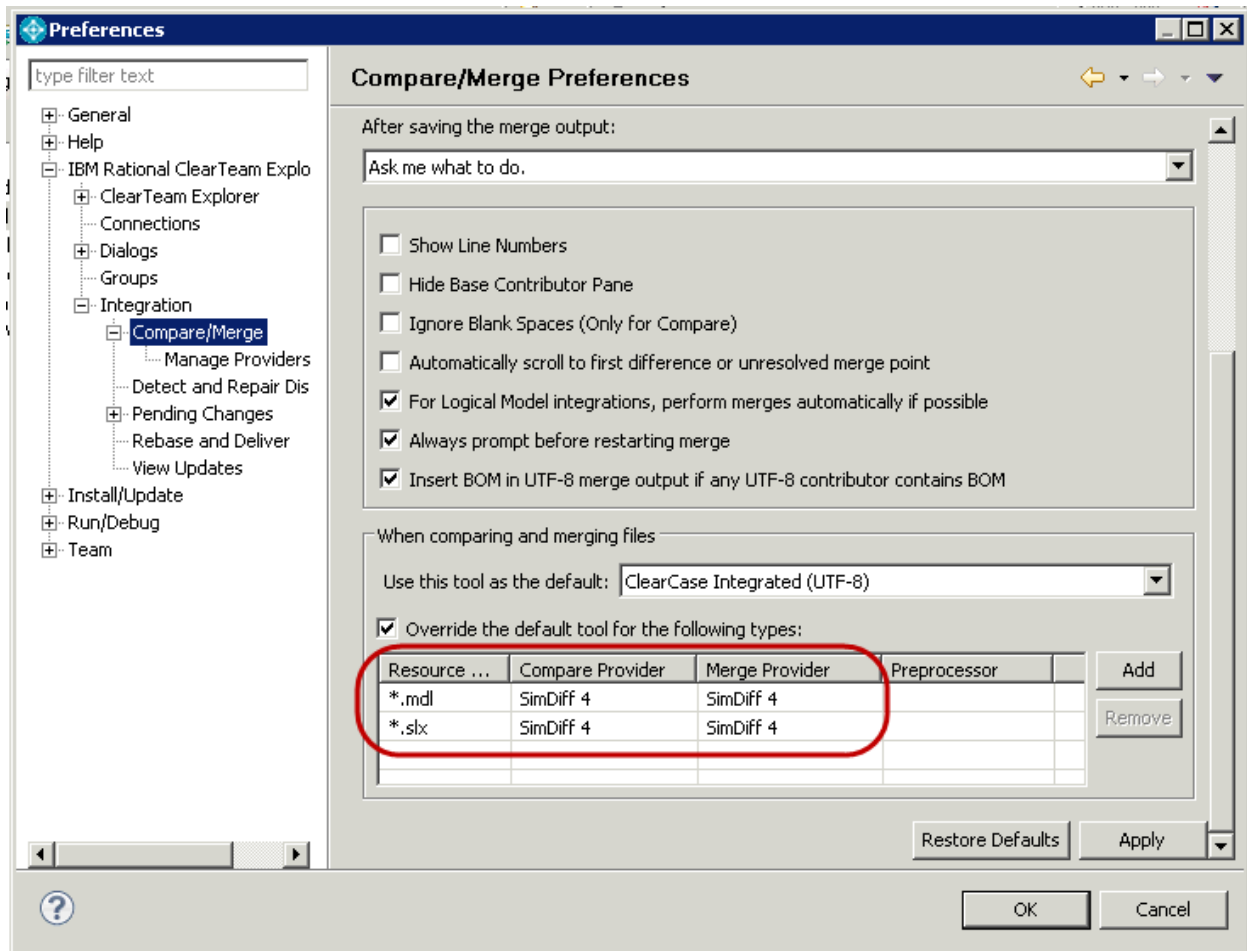
### *Configure SimDiff as a Compare/Merge Provider*

1. Open the *ClearTeam Explorer Preferences*
2. Navigate to the following section: ( *IBM Rational ClearTeam Explorer* ▷ *Integration* ▷ *Compare/Merge* ▷ *Manage Providers* )
3. Create a new provider with the following settings:
  - Provider Name: SimDiff
  - Path: `<SD installation directory>\simdiff4.exe`
  - Check the *Supports Compare Operations* checkbox
  - Compare Operations Arguments:  
`-compare -l %contrib1% -r %contrib2%`
  - Check the *Supports Merge Operations* checkbox
  - Merge Operations Arguments:  
`-merge -b %base% -l %contrib1% -r %contrib2% -o %merge_out%`
4. After the provider is created, press *Apply* in the main *Preferences* dialog to save the preferences



### Configure the SimDiff Provider to be used with MDL and SLX files

1. Open the *ClearTeam Explorer Preferences*
2. Navigate to the following section: ( *IBM Rational ClearTeam Explorer* > *Integration* > *Compare/Merge* )
3. Check the box to *Override the default tool for the following types*
4. Add a new override with the following properties:
  - Resource type: `*.mdl`
  - Compare provider: `SimDiff`
  - Merge provider: `SimDiff`
5. Add a second override with the same properties, except using `*.slx` as the resource type



## References

- IBM Infocenter:
  - About the Rational ClearTeam Explorer
    - [http://pic.dhe.ibm.com/infocenter/cchelp/v8m0r1/topic/com.ibm.rational.clearcase.help.ic.doc/topics/c\\_ctclnt.htm](http://pic.dhe.ibm.com/infocenter/cchelp/v8m0r1/topic/com.ibm.rational.clearcase.help.ic.doc/topics/c_ctclnt.htm)
  - Compare/Merge Preferences
    - [http://pic.dhe.ibm.com/infocenter/cchelp/v8m0r1/topic/com.ibm.rational.clearcase.ccrh.help.doc/topics/u\\_prefs\\_compare\\_merge.htm](http://pic.dhe.ibm.com/infocenter/cchelp/v8m0r1/topic/com.ibm.rational.clearcase.ccrh.help.doc/topics/u_prefs_compare_merge.htm)
  - Compare/Merge Providers Preferences
    - [http://pic.dhe.ibm.com/infocenter/cchelp/v8m0r1/topic/com.ibm.rational.clearcase.ccrh.help.doc/topics/u\\_prefs\\_manage\\_providers.htm](http://pic.dhe.ibm.com/infocenter/cchelp/v8m0r1/topic/com.ibm.rational.clearcase.ccrh.help.doc/topics/u_prefs_manage_providers.htm)